

LEGEND
DESCRIPTION

- ① - 6" UNDERDRAIN PER ODOT STD. DWG.
- ② - SUBGRADE COMPACTION (TYP.)
- ③ - AGGREGATE BASE
- ④ - PAVEMENT SECTION
- ⑤ - CONCRETE SIDEWALK

TYPICAL SECTION
20' WIDE PRIVATE DRIVE "B"
NTS

OWNER:

SEM VILLA II, INC.
5371 SOUTH MILFORD RD.
MILFORD, OH 45150

ENGINEER:

CESO, INC.
8534 YANKEE STREET
DAYTON, OH 45458

SITE DATA:

DEVELOPER:

SEM VILLA II, INC.

LOCATION:

5371 SOUTH MILFORD RD.
MILFORD, OH 45150

ZONING:

INSTITUTIONAL

SETBACK:

FRONT - 35 FEET
SIDE - 10 FEET
REAR - 20 FEET
BETWEEN BUILDINGS - 25 FEET TO 35 FEET

LAND USE

EXISTING: INSTITUTIONAL - SENIOR LIVING

PROPOSED:

SINGLE STORY APARTMENTS
(DUPLEX AND TRIPLEX)

PARKING:

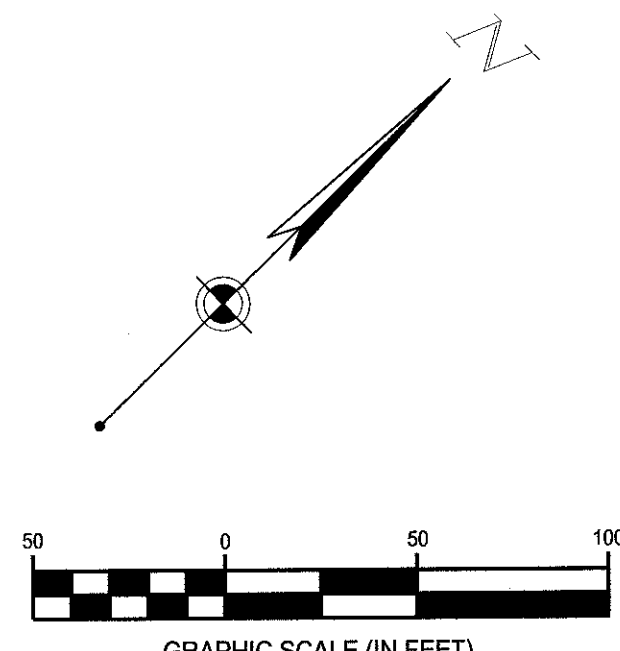
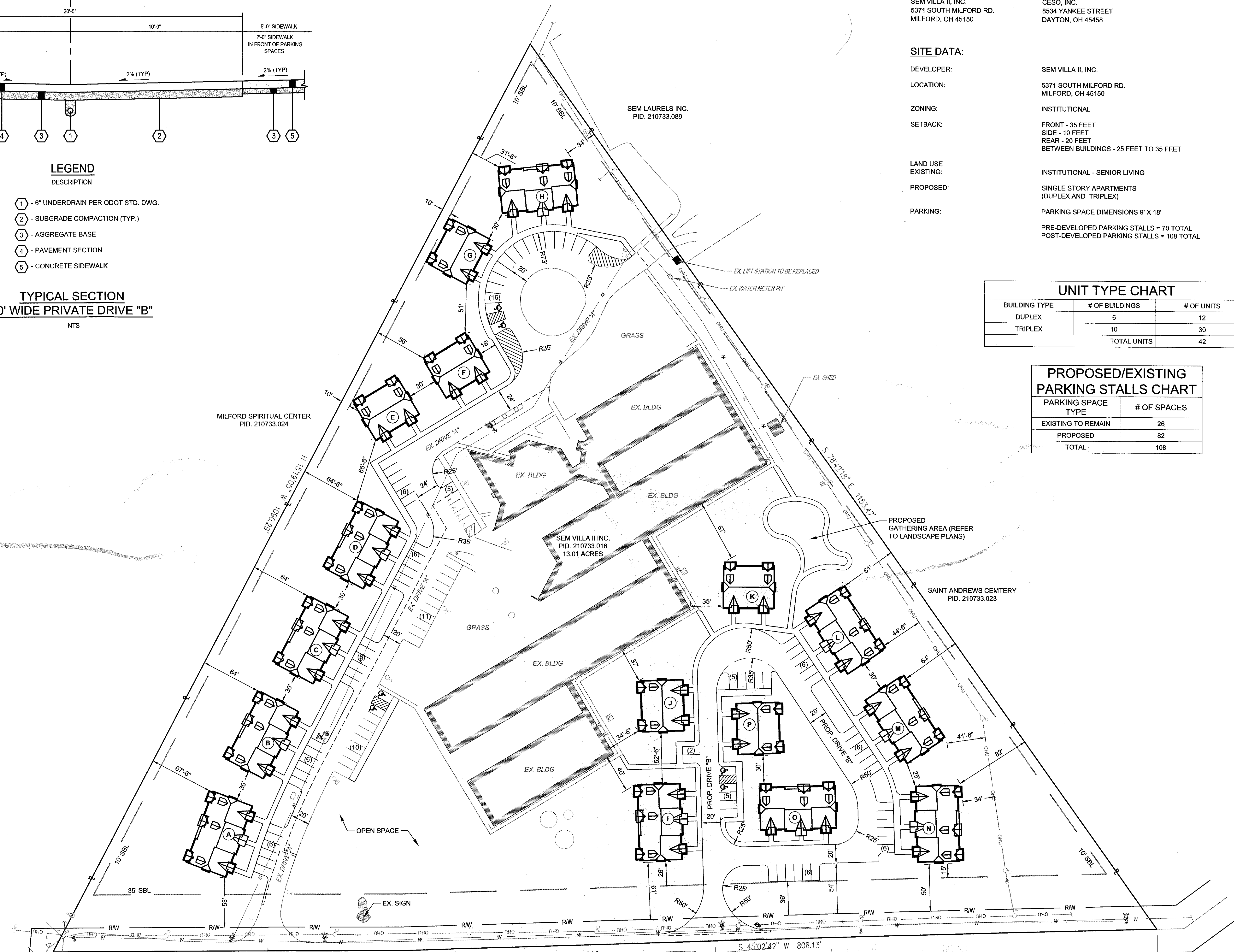
PARKING SPACE DIMENSIONS 9' X 18'
PRE-DEVELOPED PARKING STALLS = 70 TOTAL
POST-DEVELOPED PARKING STALLS = 108 TOTAL

UNIT TYPE CHART

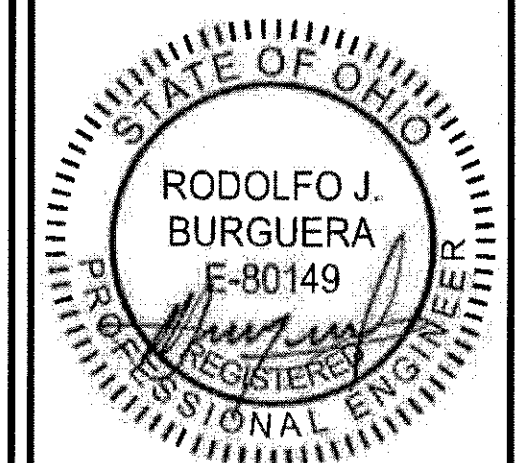
BUILDING TYPE	# OF BUILDINGS	# OF UNITS
DUPLEX	6	12
TRIPLEX	10	30
TOTAL UNITS		42

**PROPOSED/EXISTING
PARKING STALLS CHART**

PARKING SPACE TYPE	# OF SPACES
EXISTING TO REMAIN	26
PROPOSED	82
TOTAL	108



NO. DATE REVISION DESCRIPTION



SEM TERRACE
MILFORD, OH
5371 SOUTH MILFORD ROAD

**OVERALL
LAYOUT PLAN**

ISSUE:
PLANNING COMMISSION
DATE:
10/16/2017
JOB NO.: 754414
DESIGN: CAK
DRAWN: CAK
CHECKED: RB
SHEET NO.
C2.0